



PTZ MoverIP® Robotic PTZ Camera Stand Rev B

A remotely-operated, telescoping PTZ camera stand which allows the user to conceal a camera or simulate realistic dynamic jib/dolly shots in any orientation.



Floor mount version

Shown with PTZ Camera and PTZ Camera Controller,
Not included



Ceiling Mount

Four standard travel versions:
6", 12", 18", 24" (24" shown)

Various mounting configurations:

- Base plate for floor
- Wall or Ceiling (Pipe Grid or Unistrut)

Multiple Methods of Control:

1. Any PTZ camera controller that conforms to VISCA
2. Direct IP Control (Creston, NewTek or similar)
3. Computer Control using our Free, PC based PresenterTek IP Controller Software
4. Optional 10.1" Touchscreen Controller
5. Optional Simple Handheld Up Down Remote

Advantages:

- Permits quiet and discreet placement of PTZ cameras in concert venues, houses of worship, education, and business settings.
- PTZ cameras can also be retracted within ceiling/plenum spaces for security and insurance purposes
- 4 different travel version, 6", 12", 18", 24"
- Floor, ceiling or wall mount configuration
- Multiple methods to control
 - Most PTZ camera controllers that conform to VISCA over IP
 - PresenterTek's IP Controller , Free PC based software
 - Built-in Up/Down toggle switch
 - Optional 10.1" Touch-Screen Controller
 - Optional Hand-Held Simple Up/Down Remote
- Easy to Setup to your LAN using either:
 - Built in HTML Server, configure using any Internet Browser
 - Free PC Software
- Helical cable management system
- 100-240VAC 50/60 Hz power input
- Reliable, cost effective and proven design

What's Included in Standard Kit:

- Robotic PTZ camera stand (qty. 1).
- PTZ camera mounting plate assembly (4.00" diameter) with 1/4"-20 Truss Head Screw for camera mounting
- Mounting kit for Ceiling or walls
- Power Supply with 6' power cable

PTZMoverIP[®] Specifications

Total Travel	6", 12", 18", 24" Options
Extended/Retracted Height, from mounting plate to top of stand	See Sheet 4
PTZ Camera Controller /Broadcast studio or Office Audio Video Controllers Compatibility	Allows most standard PTZ camera controllers that conform to VISCA/IP or VISCA/Serial standard which includes most popular PTZ camera controllers, Broadcast studio and office Audio/Video controllers such as: <ul style="list-style-type: none"> • Sony , PTZOptics, Skaarhoj, Ross Video, Bolin, BirdDog, QSys, Ross, Creston, etc.
Input Power	AC, 100-240 50/60Hz 100W. Red power indicator lamp 3 Pin XLR connector
Speed	Variable, max of 4"/second
Weight Limit	20 lbs
Stand Tubing	Black anodize, small profile diameters (.750" diam small tube, 1.50" square large tube)
Stand Cabling	Standard RJ45 Ethernet cables
Weight	8 lbs (14 lbs with optional 3/8" thick Baseplate)

PTZ MoverIP[®] Accessories

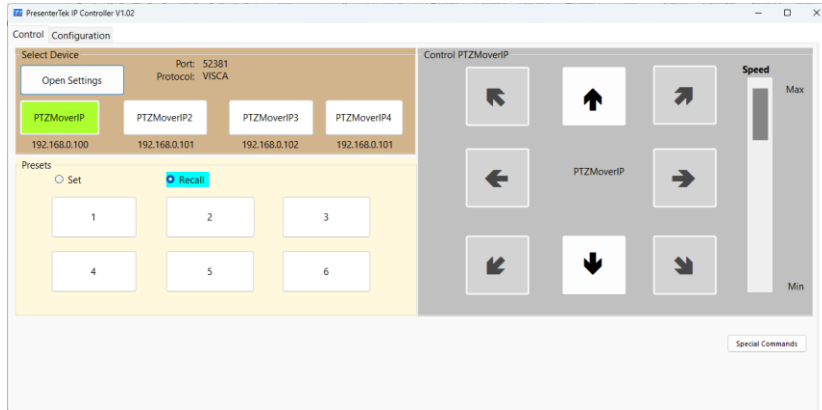
10.1" Touch Screen Controller	
Shaft Extenders, 12" and 18"	PNEX-1000-12 OR PN EX-1000-18
Baseplate for floor mounting, 14.5" diameter, 3/8" thick with center mounting or off-set mounting options	PN STB-1001M
Baseplate for floor mounting, 14.5" diameter, 5/8" thick with center mounting or off-set mounting options	PN STB-1002M
Simple Up/Down Hand Held Remote Control	



Ceiling/Wall mounting kit



Hand-Held Up/Down Remote Option



PresenterTek's IP Controller PC Software

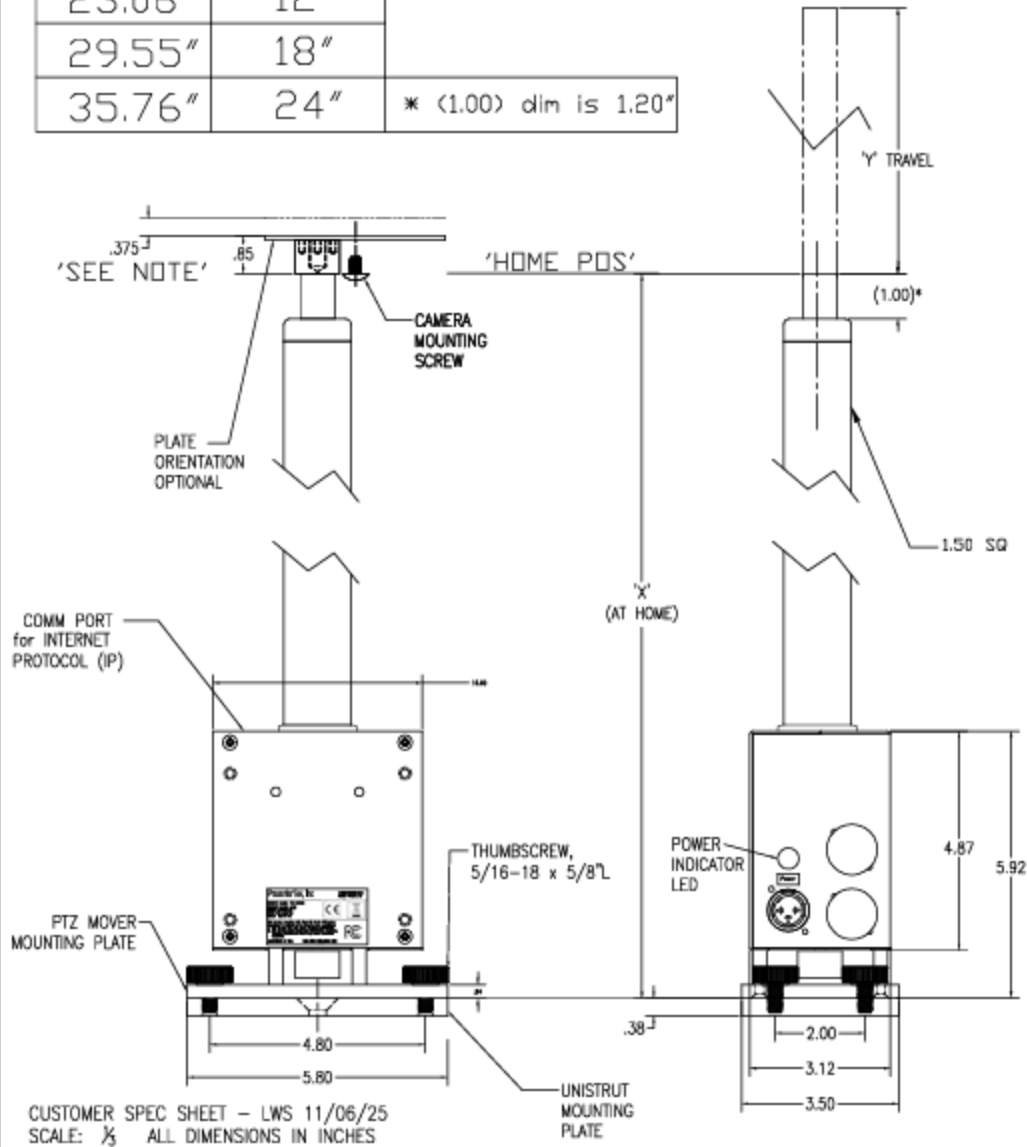


Touch Screen Controller Option

PTZMover-IP, 6908

NOTE: WHEN STAND IS FIRST POWERED AT 'HOME' POSITION,
STAND WILL MOVE .375" IN 'UP' DIRECTION
AND THEN BACK DOWN TO HOME.
'HOME' IS THE LOWEST POSITION.

'X' DIM	'Y' TRAVEL	
17.15"	6"	
23.06"	12"	
29.55"	18"	
35.76"	24"	* (1.00) dim is 1.20"



TeleStepper®/PTZ stands are compliant with the following standards:

Safety: EN62368-1:2014+A11:2017 and EMC

Emissions: EN 55032:2015/AC:2016-07

Immunity: EN 61000-3-2:2014 , EN 61000-3-3:2013 , EN 55035:2017

CE Declaration

TeleStepper®/PTZstands are compliant with all applicable directives necessary for declaration of conformity. All models are RoHS compliant with CE mark affixed.