



# TeleSpinIP

Professional Broadcast TV and  
Teleprompting Hood Rotational module

**Upgrade your current TelePrompting hood by adding our TeleSpinIP module to your existing Tripod or Pedestal. Can be remotely-operated using most PTZ camera controllers!**

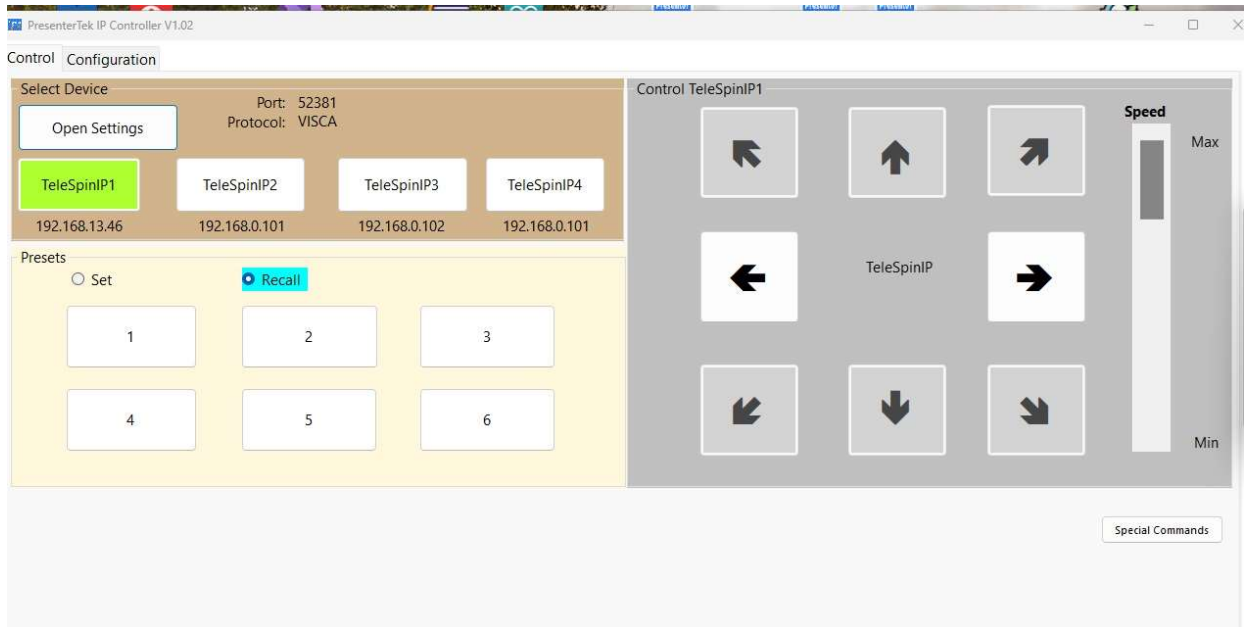


**Shown with PTZ Camera Controller, TelePrompting hood, TalentMonitor and Tripod (not included)**

- **Add 180-degree rotation to your existing PTZ TelePrompting hood**
- **Standard Dovetail mounting. Easily mounts to almost any Tripod**
- **75/100 mm VESA mounting to your TelePrompting hood**
- **Operates with almost any PTZ Camera controller**

# TeleSpinIP:

- Remotely positionable for multiple talents
- Standard dovetail mount adapts to almost any Tri-pod or pedestal
- 75/100 mm VESA mounting to your PTZ TelePrompting hood
- Quiet and smooth direct-drive operation
- Extremely affordable option
- Studio use or Portable for remote events
- Repeatable shot recall using pre-set positioning
- Multiple Methods of Operation
  1. Operate using popular PTZ camera controllers that conform to VISCA-IP or VISCA-Serial Standards including: Sony, BirdDog, PTZ Optics, RocoSoft, Creston, Ross Video, Bolin-- and others
  2. Free PC Software using our Free PresenterTek IP Controller Software



### 3. PresenterTek's Touch-Screen Controller



### 4. Manual Pan Left/Right Toggle Switch on unit

- Standard 10/100 Mbps Ethernet RJ45 input
- Built in HTML server and free PC based software for easy configuration to your LAN
- Automate studio production & reduce labor costs to achieve high ROI
- Perfect for live-stream events
- Manual toggle switch for Pan left/right
- Warranted for 3 years

## **What's Included:**

- Pan Module
- Detachable top plate with 75/100 mm VESA mounting
- Hardware to attach top plate to Pan module
- 100/240 VAC IEC input Power Supply with 6' power cable
- Hardware and tools required for assembly

# Specifications:

|   |  |
|---|--|
| <b>Rotation</b>   | +/- 90 degrees   |
| <b>Over-Rotation Protection</b>                             | Left and right limit switches prevent over-rotation.   |
| <b>Rotation Speed</b>                                       | 180 degrees in 8.5 Sec   |
| <b>Rotational repeatability</b>                             | +/- 1 degrees  |
| <b>Payload</b>  | 100 lbs.   |
| <b>Mounting to Teleprompting Hood and camera assemblies</b> | VESA and additional camera mounting holes adapt to any standard 75- or 100-mm monitor mounting pattern, cheese plate or standard camera or prompter hood   |
| <b>Control</b>  | <ul style="list-style-type: none"> <li>❑ Wide variety of PTZ camera controllers that conform to either the VISCA-IP or VISCA-Serial standards</li> <li>❑ Manual toggle switch for Pan Left/Right</li> </ul>  |
| <b>Control Interface</b>                                    | <ul style="list-style-type: none"> <li>❑ 10/100 Mbps Ethernet</li> <li>❑ Standard RJ45 connector</li> </ul>  |
| <b>LAN Configuration</b>                                    | <ul style="list-style-type: none"> <li>❑ Built in HTML server</li> <li>❑ Free Windows based PC app</li> <li>❑ Supported Protocols:               <ol style="list-style-type: none"> <li>1. UDP</li> <li>2. TCP/IP</li> <li>3. Static IP</li> </ol> </li> </ul> |
| <b>Power input</b>  | <ul style="list-style-type: none"> <li>❑ +24V, 3Pin XLR connector</li> <li>❑ On/Off power switch</li> <li>❑ Red power indicator LED</li> </ul>   |
| <b>AC System Power</b>                                      | <ul style="list-style-type: none"> <li>❑ Input Voltage:100-240 VAC 50/60 Hz</li> <li>❑ UL and CE certified external wall supply</li> </ul>   |
| <b>Weight</b> (not including PTZ Camera Hood)               | <ul style="list-style-type: none"> <li>❑ 7lbs.</li> </ul>  |
| <b>Certifications</b>                                       | RoHS compliant, UL-listed components. Power supply UL and CE approved.   |
| <b>Warranty</b>   | Three years from date of purchase, parts and labor   |

# TeleSpinIP Dimensions

